

CH Iroquois-KC Auction Annie's Lil' Angel, Two-Tone Chamoisee
 Iroquois-KC Auction Annie's Lil' Anagram, Two-Tone Chamoisee
 (tattoo problem caused this doe to loose her 3rd leg before she died.)
 CH Iroquois-KC Auction Annie's Lil' Charade, Red Chamoisee
 GCH Iroquois-KC Auction Annie's Red Rumor, Red Chamoisee

SS: ++*B Sodium Oaks SP Whoopee
 SIRE: +*B Sodium Oaks Xcell
 SD: GCH Sodium Oaks Twister Willow 6*M
 DS: ████████████████████
 DAM: CH Iroquois-KC Auction Annie (HES EX90.05 (91-88-91-90)
 (LA 5-00 VG88 (V-V-E-E)
 DD: ████████████████████



CH Iroquois-KC Auction Annie

Annie is the foundation of literally half of the herd today. Annie was purchased at a local Auction in 1995 for \$82.50. She had been a registered finished Champion in her previous American Alpine life. Unfortunately her registration was un-attainable, a story in and of it's self. Annie was one of my all time favorite animals and lives on in my herd through Two of her lovely daughters, 5 grand-daughters and numerous great-grand-daughters. Annie was an embryo donor doe back in 1996. These are the kids that are her legacy. Annie now has Grand-daughters & Great-Grand-daughters in several herds nation wide that are winning championships as well! Angel has many BIS wins — Anna 1 x BIS. Anna would have finished but lost a leg due to a tattoo discrepancy before she died. Charade was 1x BIS and AI Futurity winner. Rumor was crowned 2000 Reserve National Champion! These does are producing lovely up and coming daughters and grand-daughters that have finished Championships and Best Doe In Show Awards in my herd.



CH IKC Auction Annie's Lil' Angel EX92 EEEE



IKC Auction Annie's Lil' Anagram EX90 EEVE



CH IKC Auction Annie's Lil' Charade EX90 E+EE



GCH Iroquois-KC AA Red Rumor EX 90 VEEE

SS: ++*B Sodium Oaks SP Whoopee
 SIRE: +*B Sodium Oaks Xcell
 SD: GCH Sodium Oaks Twister Willow 6*M
 DS: GCH+*B Whip'erwil Wapoga
 DAM: CH Iroquois-KC Auction Annie (HES EX90.05 (91-88-91-90)
 (LA 5-00 VG88 (V-V-E-E)
 DD: GCH Waiilatpu Opal's Jade *M

ANGEL is not only a well proven doe, but she is my favorite animal in the herd. For years she was nearly undefeated in the show ring. By the time she actually got to her one and only National Show she was placed 2nd at the tender age of 8 years old. (2005)

ANGEL has produced two daughters for me that Linear Appraised at 90 or above. Angel was never able to produce a Registered Buck kid due to the tragic loss of her dam's American Alpine status. I'm certain that her bucks would have made an outstanding contribution to the American Alpine Gene Pool

ANGEL was laid to rest this year at age 14 years young.



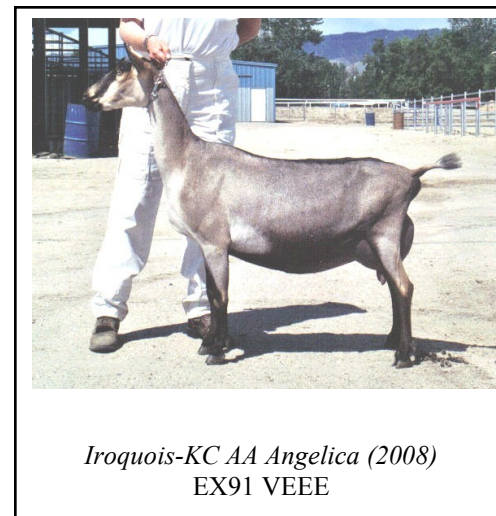
CH IKC Auction Annie's Lil' Angel EX92 EEEE

SS: *B IKC Sasin Black Jack
 SIRE: ++*B Iroquois-KC Black Moses
 SD: Iroquois-KC Kiwi's Reflection 5*M
 DS: ++*B Sodium Oaks Xcell
 DAM: CH IKC Auction Annies Lil' Angel (EX92 EEEE)
 DD: CH Iroquois-KC Auction Annie

"Angie" is very stylish and correct with a high, wide mammary system. She very much resembles her dam, Angel. Angie is a 75% American Alpine. Her doe kids will be American status. In 2009 Angie quite easily finished her championship her first time out. Trading places with her own 2-yr-old 3/4 sister for the Grand and Res. Grand Awards in the show rings. (Ashes)

Angie made her star on a one-day-test in 2007. Then Stared again on DHIR in 2010.

LA 1-02 VG85 VV+V 5-04 EX91 VEEE (2010)
 2-02 EX90 VEVE
 4-01 EX91 VEEE DHIR: 4-09 245 1630 4.7% 76



Iroquois-KC AA Angelica (2008)
 EX91 VEEE

Sire's Sire: ++*B Walnut-Fork R. Group Effort *DNA*
 SIRE: *B Walnut-Fork G.E. Kilimanjaro (VG8 VVE) *DNA*
 Sire's Dam: SGCH Paisley-Park T. Kenya 6*M (EX92 EEEE)

DS: *B Iroquois-KC Black Moses
 DAM: Iroquois-KC AA Angelica 1*M (LA EX90 VEVE)
 DDS: ++*B Sodium Oaks Xcell
 DD: CH IKC Auction Annie's Lil' Angel (EX92 EEEE)
 DDD: CH Iroquois KC Auction Annie (LA VG88 VVEE)

"Appy" is a bit small for her age but is now beginning to catch up. Her growth was a bit slowed due to our over zealous breeding program last year resulting in Appy freshening before her first birthday. She is however a very nice 2-yr-old with a correct mammary. Her general appearance is stunning as she grows. Shown several times as a 2-yr-old standing 1st and 2nd in large classes.

LA: 1-02 VG85 VV+V DHIR: 1-03 249 1310 4.6 60 2.9 38 98 20
 2-03 VG89 EVVE



SS: +*B SGCH Cherry Glen Tierro Inman (EX93 EEE)

SIRE: *B Cherry Glen Inman Toga

SD: GCH Cherry Glen WFSC Tecoa Touchee 3*M (LA EX92 VEVE)

DS: ++*B Sodium Oaks Xcell

DAM: CH IKC Auction Annies Lil' Charade (EX90 E+EE)

DD: CH Iroquois-KC Auction Annie (VG88 VVEE)

“Ashes” is very stylish and correct with an incredible fore udder.

Ashes is a 75% American Alpine. Her doe kids will be American status.

“Ashes” is a special blessing in our herd being the last born of Charade who was laid to rest in the spring of 2008. When all of the daughters of Toga were disposed of, Ashes was kept as a companion just for her dam.

Ashes is proving to be an exceptional show doe going Best In Show twice in 2011!

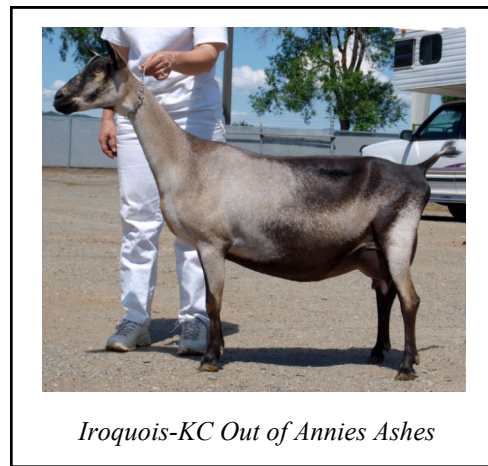
LA: 2-00 EX91 EEEV

3-05 EX90 VEEE

4-02 EX92 EEEE

DHIR: 2-11 305 2540 3.7% 95 Extended: 366 2950 108

SHOW RECORD: 3xGCH, 3x BOB, 2x BIS



Iroquois-KC Out of Annies Ashes

GCH IROQUOIS-KC MAKYA AA ASCEND 2*M AA1155777

SS: *B Pearl Valley Yreka Laredo LA90 VEE @ 2 yrs.

SIRE: +*B Pearl Valley Lokoda Makya

SD: SGCH Pearl Valley Mandolay LA EX93 EEEE

DS: *B Cherry Glen Inman Toga

DAM: SGCH Iroquois-KC Out of Annie's Ashes (EX92 EEEE)

DD: CH IKC Auction Annie's Lil' Charade (EX90 E+EE)

“Screamer” has a nice topline, smoothly blending shoulders and a long and smoothly blended fore udder. Pictured as a 3-yr-old milker.

She will be bred to Killer for 2012 kidding.

LA: 1-02 86 +V+V

2-04 88 +EEE

3-02 88 E+EV (FRESH BUT WITHOUT MILK)

DHIR:

2-01 305 2440 3.6% 89 67 EXT: 341 2700 101 73

SHOW RECORD: 3 x GCH, 2 x BOB, 1x RGCH



IROQUOIS-KC MAGIC ANAGRAM AA1495504 3*M

SS: *B WALNUT FORK XE KHARTOUM (EX91 EEE)

SIRE: +*B IROQUOIS-KC MAGIC MOMENT (EX90)

SD: SGCH KL MAGIC MAGDALENA (EX91 VEEE)

DS: +*B Pearl Valley Lokoda Makya

DAM: GCHvIroquois-KC Makya AA Ascend 2*M

DD: SGCH Iroquois-KC Out of Annie's Ashes (EX90 VEEE)

“Anagram” is beautiful. We are hoping for great things from her.

Exceptional feet, topline, front end and a fantastic udder all the way around to top of the package.

DHIR: 1-02 292 1430 4.5% 64 49

LA: 1-04 VG83 +V+V

2-02 NOT SCORED DUE TO ILLNESS



SG IROQUOIS-KC KILLER AA AIYANNA 1*M AA1365406 Red Chamoisee 1/14/06

Sire's Sire: +*B Walnut-Fork R. Group Effort *DNA*
SIRE: +*B Walnut-Fork G.E. Kilimanjaro (VG8 VVE) *DNA*
 Sire's Dam: SGCH Paisley-Park T. Kenya 6*M (EX92 EEEE)

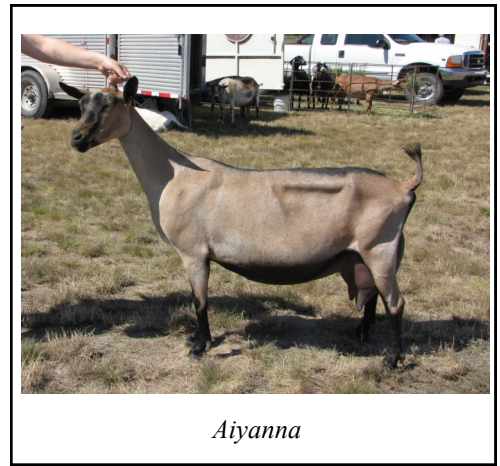
Dam's Sire: *B D-D--S Promise's Sasin Storm
DAM: SG Olentangy IKC-AA SS Antares (LA EX90 VEEE)
 DD: CH IKC Auction Annies Lil' Charade (LA EX90 E+EE)
 DDD: CH Iroquois-KC Auction Annie (VG88 VVEE)

"Aiyanna" is a very large, powerful and impressive doe. She is deep Red with exceptional milk production. "Aiyanna" very much resembles her dam and grand-dam in color and style. She is level over the top line and has very nice feet and legs. Aiyanna is even nicer than her dam, who scored exceptionally well and could have finished her championship as well but was one that was sacrificed for the financial completion of the dairy.

Aiyanna is another doe who milks exceptionally well and is not being bred this year so as to have winter milk in the dairy. (Milking Through)

Aiyanna was not taken out for the summer show seasons but was taken to the Central Washington State fair where she placed Grand for her first leg toward her permanent championship. Anna was again not shown in 2009 until the CWSF. She was first in her class being noted by the judge as the doe who most exemplified the 'Dairy' in Dairy Goat Show.

LA 1-07 FS87 +EEE //2009 EX91 VEEE // 2010 EX90 VEEE//// DHIR: 4-03 305 3840 3.8% 147 // EXT. 329 4010 153



Aiyanna

SG IROQUOIS-KC MAKYA AA ARIELLE AA1460649 1*M Broken Cou Clair 3/24/08

SS: *B Pearl Valley Yreka Laredo LA90 VEE @ 2 yrs.
SIRE: *B Pearl Valley Lokoda Makya
 SD: SGCH Pearl Valley Mandolay LA EX93 EEEE

DSS:*B Iroquois-KC Black Moses
 DS: Iroquois-KC M Miakoda
DAM: Iroquois-KC MK AA Amanda
 DD: GCH Iroquois-KC AA Angelica 1*M (LA EX91 VEEE)
 DDD: CH IKC Auction Annie's Lil' Angel (EX92 EEEE)
 DDDD: CH Iroquois KC Auction Annie (LA VG88 VVEE)

LA: 2-06 FS88 VEEV 2010
 DHIR: 2-01 305 3200 4.8% 154 EXT 339 3540 174 (TOP TEN)
 —NOT YET FRESH for 2011 LA or Spring Shows—

She was a member of our 2 times Best In Show Dairy Herd in the fall of 2011. Watch for Arielle in our 2012 Show String!



SG IROQUOIS-KC KRAC WINDFLOWER 1*M AA1424616 Belted Chamoisee 4/30/07

SSS: SG+*B Walnut-Fork XE Khartoum (LA EX92EEE)*DNA*
 SS: CH *B MT Zion Koobi Fora (LA EX90 VEE) *DNA*
 SSD: MT Zion OTD Sprinkles 7*M

SIRE: *B MT Zion Krakatoa
 SDS:SG+*B Walnut-Fork XE Khartoum (LA EX92EEE)
 SD: SG MT Zion Khartoum Bee Sweet 3*M (LA EX90 VVEE)
 SDD: SGMT Zion CS Bee-Loved 2*M

DS: +*B Walnut-Fork G.E. Kilimanjaro *DNA*
DAM: Iroquois-KC Killer Wallflower
 DD: Iroquois-KC Native Sunflower
 DHIR: 3-01 253 1930 4.1 79 3.0 57

LA: 2-02 FS 88 VEEV
 3-04 VG89 VEVE
 4-02 —NOT YET FRESH—
 Show Record— 1xGCH, 2 x RGCH

