

SS: SGCH++*B Shahena'ko Sumo Tierro
(Sire of the 1998 Reserve National Champion)

SIRE: *B Iroquois-KC On Yonder Star

SD: Iroquois-KC Wild Bleu Yonder 2*M

DS: SG+*B Shahena'ko Yankee (ADGA Elite Sire)

DAM: Iroquois-KC Black Magic 1*M

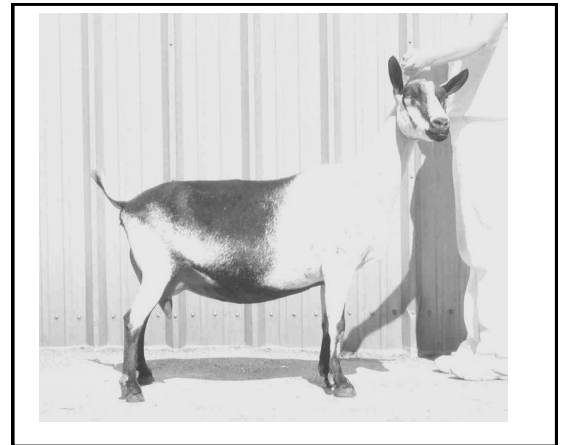
(2-11 305 2804 114 4.3% 97p)(LA 3-00 FS88 (VV+E)

DD: Iroquois-KC Baby Magic

2003 Linear Appraisal: **7-06 EX90 (EVEE)**

2005 Linear Appraisal: **9-04 EX90 (EVVE)**

“MAGGIE” has always been a favorite doe. MAGGIE crossed the Rainbow Bridge, at age 10. She was one of the nicest does in the herd. She excelled in general appearance and smoothness of blending. She had the most correct front-end in the herd and passed this trait on to her offspring. Maggie was the First place yearling at the 1997 Canadian National Show with first udder. Maggie has proven herself as an awesome brood doe with 5 daughters in 3 herds. Maggie is here as a reference doe for the three daughters that follow.



“CH Iroquois-KC Magic Magpie” (2003)

IROQUOIS-KC MAGIC MAGDALENA 3*M AA1388330 Two-Tone Chamoisee

4/30/06

Sire's Sire: +*B Walnut-Fork R. Group Effort *DNA*

SIRE: *B Walnut-Fork G.E. Kilimanjaro *DNA*

Sire's Dam: SGCH Paisley-Park T. Kenya 6*M

SS: SGCH++*B Shahena'ko Sumo Tierro
(Sire of the 1998 Reserve National Champion)

Dam's Sire: *B Iroquois-KC On Yonder Star

SD: Iroquois-KC Wild Bleu Yonder 2*M

DAM: CH Iroquois-KC Magic Magpie LA @ 9yrs EX90 (EVVE)

DS: SG+*B Shahena'ko Yankee (ADGA Elite Sire)

Dam's Dam: Iroquois-KC Black Magic 1*M

(2-11 305 2804 114 4.3% 97p)(LA 3-00 FS88 (VV+E)

DD: Iroquois-KC Baby Magic

“MAGGS” has it all going for her. She is one of the nicest 5-yr-old does in the herd. She excels in general appearance and smoothness of blending, mammary system and teats and teat placement. Placed consistently in 2nd & 3rd place this year when shown in very large North West classes.



LA: 1-03 VG86 (+VEV) 3-02 EX90 (VVEE) **4-04 EX91 (VEEE)**

DHIR: 3-11 305 2570 3.7% 94

IROQUOIS-KC MAGIC MOCKING BIRD 3*M

AA1352317

Black

4/14/05

SS: SGCH++*B Sodium Oaks Royal Risk

SIRE: SG+++*B Sodium Oaks Sasin (3 National Champion daughters)

SD: GCH Sodium Oaks Kiwi Mallow (Converted CL to LA EX91 EEEE)
(1982 Res. National Champion ~ CL-EX91 90-90-90-93)

dss: SGCH++*B Shahena'ko Sumo Tierro
(Sire of the 1998 Reserve National Champion Kenya)

DS: *B Iroquois-KC SST On Yonder Star

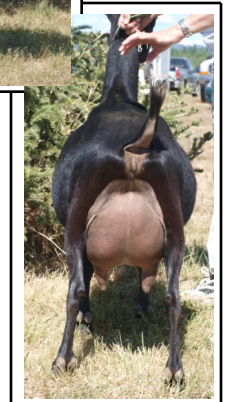
dsd: Iroquois-KC Wild Bleu Yonder 2*M

DAM: CH Iroquois-KC Magic Magpie (7-06 EX90 EVEE)

dds: SG+*B Shahena'ko Yankee (ADGA Elite Sire)

DD: Iroquois-KC Yankee Black Magic 1*M (2-11 305 2804 114 4.3% 97p)
(LA 3-00 FS88 (VV+E) ~ HES 2-00 EX90.2 (90-92-88-90)

“Birdie” is a lovely old doe. She is solid black with an exceptional udder. This pedigree is backed with Type, Production and National Show wins. Some does, you just have to have faith and wait them out. Birdie is one of those does as you can see by her LA scores as she ages. Birdie is bred to LoverBoy for March freshening.



LA 1-03 FS84 +VA+ E in head. 2-04 FS87 VEEV E in Front Legs & Back

4-02 FS89 VEEE

5-04 EX91 VEEE

DHIR: 5-00 265 1740 4.3% 75

SS: SG+*B Shahena'ko Yankee
SIRE: *B D-D-S Promise's Y Pathfinder
 SD: SGCH D-D-S Faith's Yreka Promise *M (EX92 EEEE)
 DD: *B Iroquois-KC On Yonder Star
DAM: CH Iroquois-KC Magic Magpie
 DD: Iroquois KC Black Magic

"Melody" is a very nice doe who has a very well extended fore udder. She has earned 2 legs towards her championship status. She has the most correct mammary in our herd and the will to milk that goes with that. Melody is bred to MAKYA for April freshening.

LA: 1-04 VG84 +++V **8-03 EX90 VVEE**
 3-01 EX90 VEVE
 4-02 EX91 VEEE DHIR: 7-09 305 2010 4.0% 81



"Iroquois-KC Magic Melody"

Sire's Sire: +*B Walnut-Fork R. Group Effort *DNA*
SIRE: *B Walnut-Fork G.E. Kilimanjaro *DNA*
 Sire's Dam: SGCH Paisley-Park T. Kenya 6*M
 SS: SG+*B Shahena'ko W Yankee
 Dam's Sire: *B D-D-S Promise's Y Pathfinder
 SD: SGCH D-D-S Faith's Yreka Promise *M (EX92 EEEE)

DAM: Iroquois-KC Magic Melody (LA 4-02 EX91 VEEE)
 DD: *B Iroquois-KC On Yonder Star
 Dam's Dam: CH Iroquois-KC Magic Magpie (LA 9-04 EX90 EVVE)
 DD: Iroquois KC Black Magic

"MANDY" is a very promising doe who has a very well extended fore udder. Mandy has a wider rear udder than her dam and may outshine her in the future. Mandy was not shown until 2010 because we didn't realize she was so beautiful until we clipped her for linear appraisal. Mandy is bred to LOVER-BOY for April freshening

LA: 1-04 VG86 VVEV 3-03 VG88 V+EV **4-05 EX91 VEEE**
 DHIR: 3-11 275 2520 4.2% 115



Mandy @ 4 years

SS: *B Pearl Valley Yreka Laredo LA90 VEE @ 2 yrs.
SIRE: *B Pearl Valley Lokoda Makya
 SD: SGCH Pearl Valley Mandolay LA EX93 EEEE
 DS: *B D-D-S Promise's Y Pathfinder
DAM: Iroquois-KC Magic Melody (LA 4-02 EX91 VEEE)
 Dam's Dam: CH Iroquois-KC Magic Magpie (LA 9-04 EX90 EVVE)

Love Song is an outstanding doe! Shown once for Jr. GCH and Best Junior Doe of Show! 2011 first show she was GCH. Song finished her Championship in 2011 at the Dist 7 Alpine Specialty! She really is stunning.

Love Song is the dam of our Junior Herd Sire, Lover Boy.

LA: 2-02 VG88 VEVE
3-00 EX90 EEEE
 DHIR: 1-09 296 2520 3.2% 81

